

BHD SERIES

Hydraulic Concrete Distributors

BHD SERIES

Hydraulic Concrete Distributors



BHD 32+4



BHD 28+4



BHD 24+3



BHD 18+3



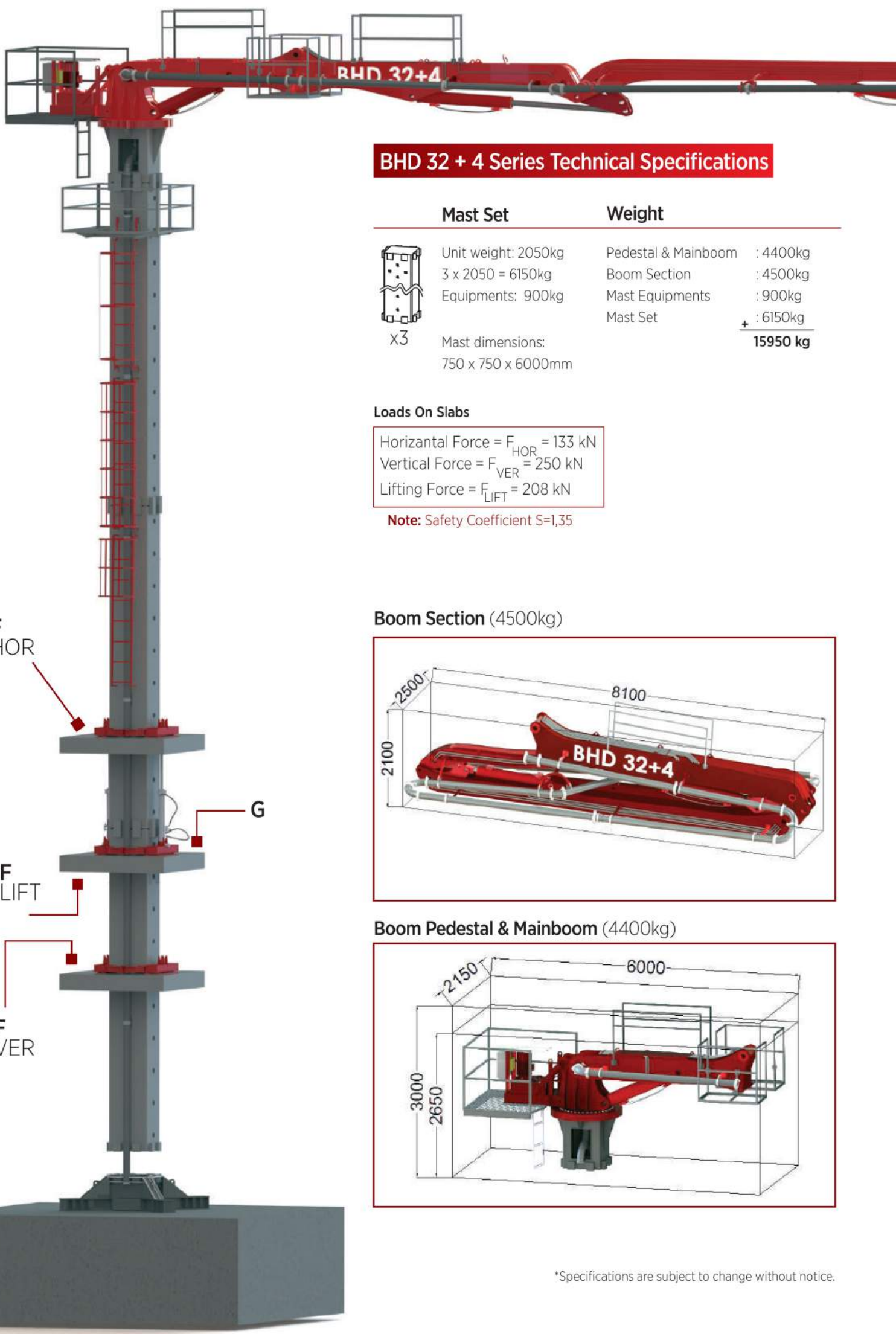
BHD 17+3



BHD 13



BHDM 12



BHD 32 + 4 Series Technical Specifications

Mast Set



x3

Unit weight: 2050kg
 3 x 2050 = 6150kg
 Equipments: 900kg
 Mast dimensions:
 750 x 750 x 6000mm

Weight

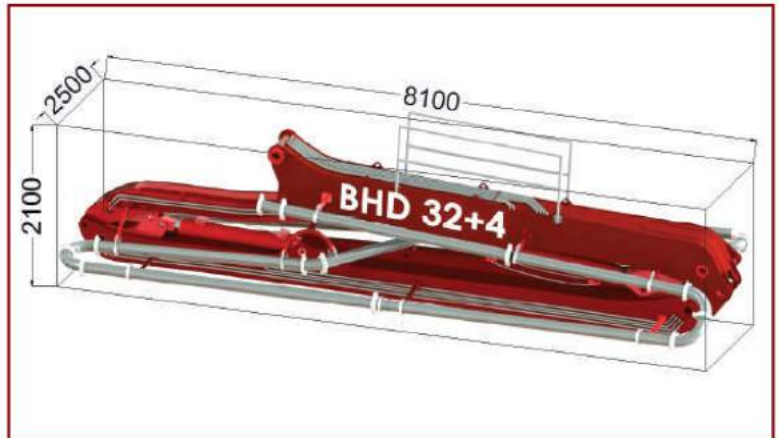
Pedestal & Mainboom	: 4400kg
Boom Section	: 4500kg
Mast Equipments	: 900kg
Mast Set	: 6150kg
	+ 15950 kg

Loads On Slabs

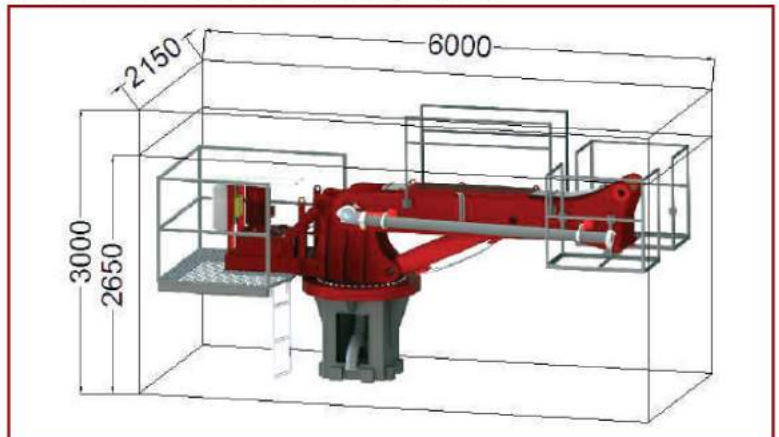
Horizontal Force = $F_{HOR} = 133 \text{ kN}$
 Vertical Force = $F_{VER} = 250 \text{ kN}$
 Lifting Force = $F_{LIFT} = 208 \text{ kN}$

Note: Safety Coefficient S=1,35

Boom Section (4500kg)

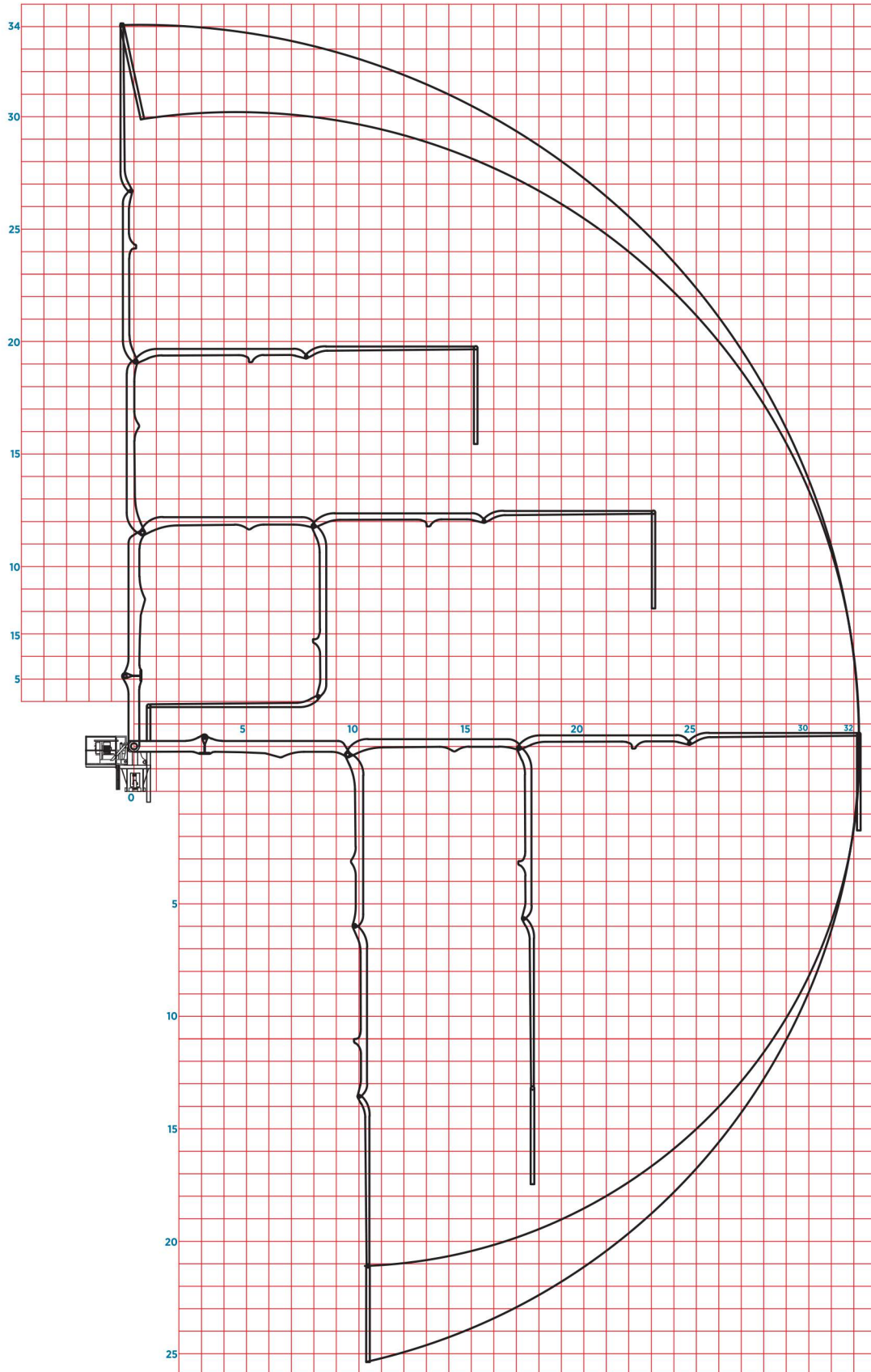
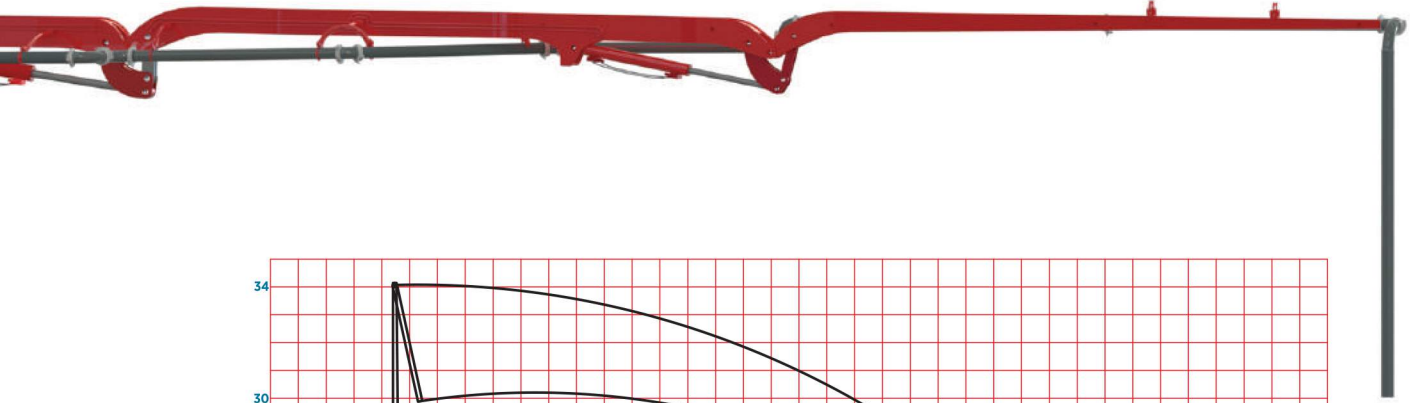


Boom Pedestal & Mainboom (4400kg)

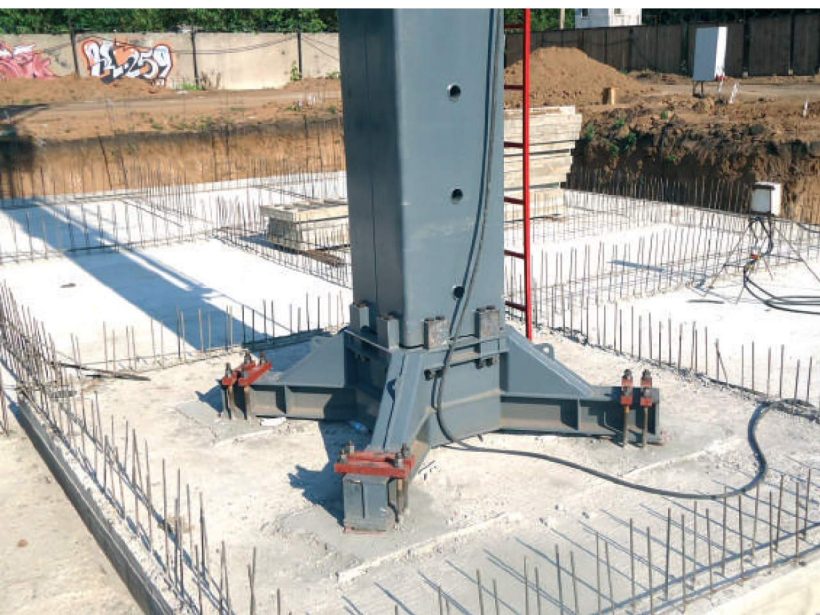
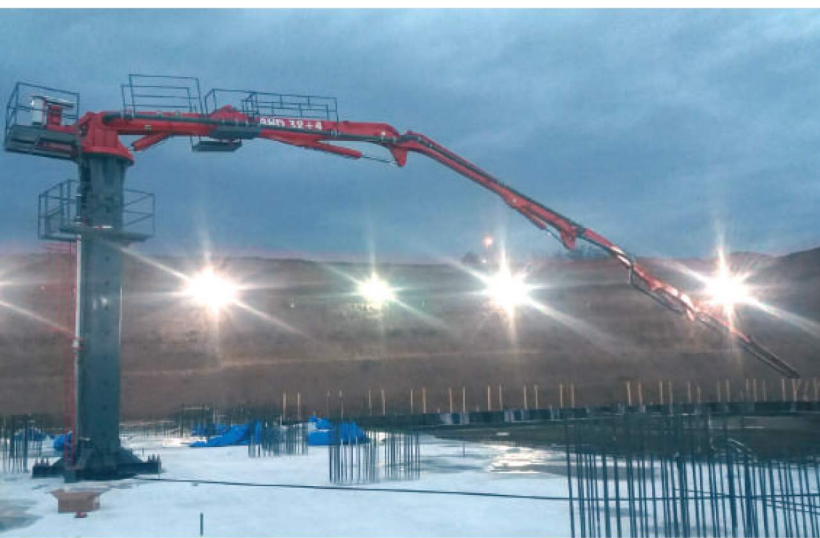


*Specifications are subject to change without notice.

BHD 32+4







BHD 28 + 4 Series Technical Specifications

Mast Set

Weight



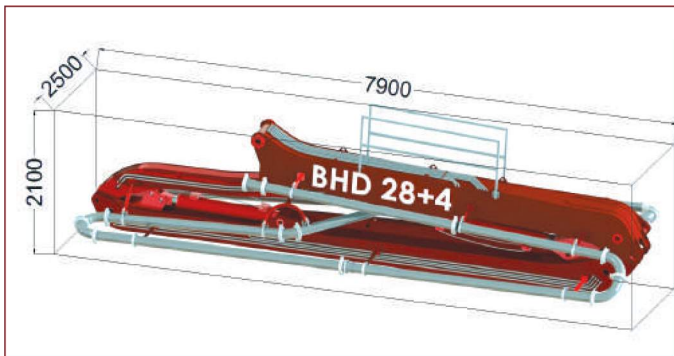
x3

Unit weight: 2050kg
3 x 2050 = 6150kg
Equipments: 900kg

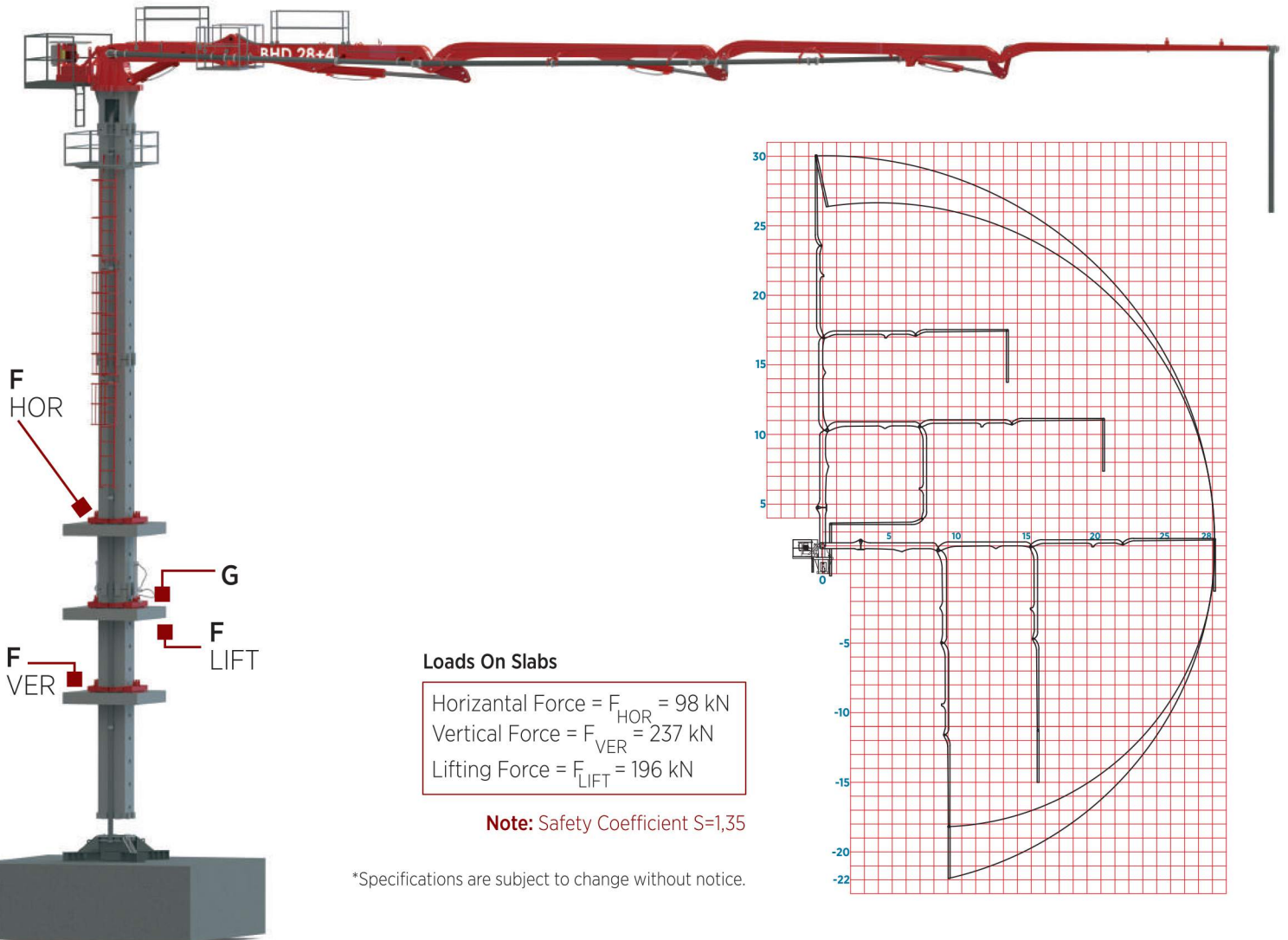
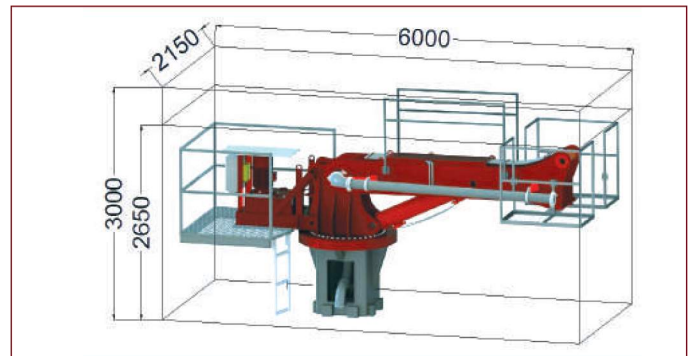
Mast dimensions:
750 x 750 x 6000mm

Pedestal & Mainboom	: 4250kg
Boom Section	: 4050kg
Mast Equipments	: 900kg
Mast Set	+ : 6150kg
	15350 kg

Boom Section (4050kg)



Boom Pedestal & Mainboom (4250kg)



*Specifications are subject to change without notice.

BHD 24+3

Bhd 24 + 3 Series Technical Specifications

Mast Set

Weight

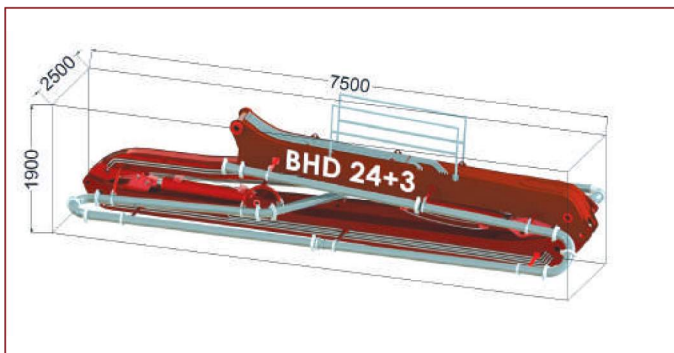


x3

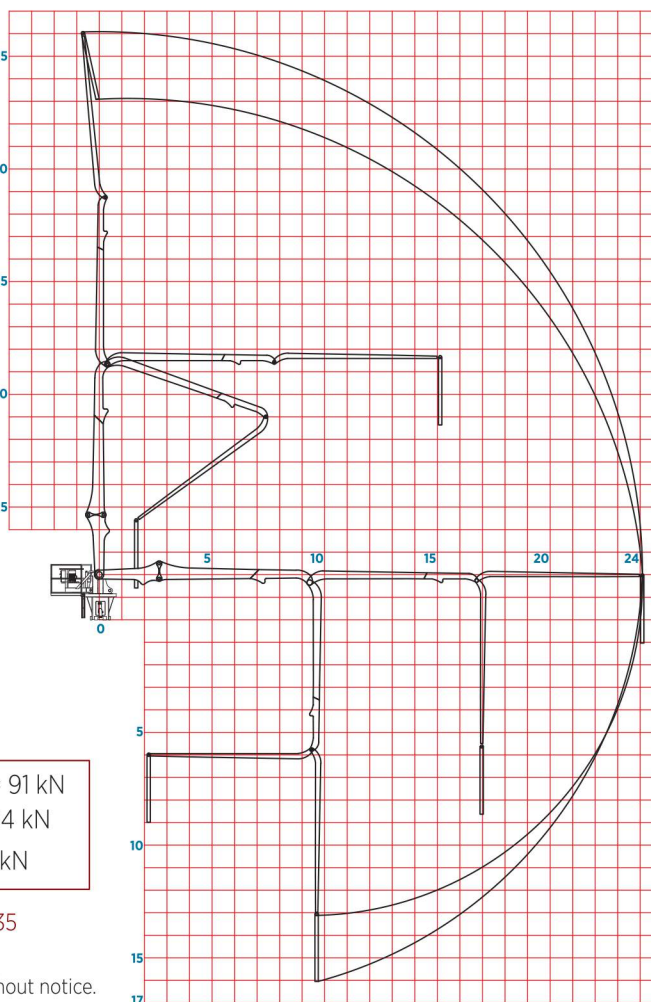
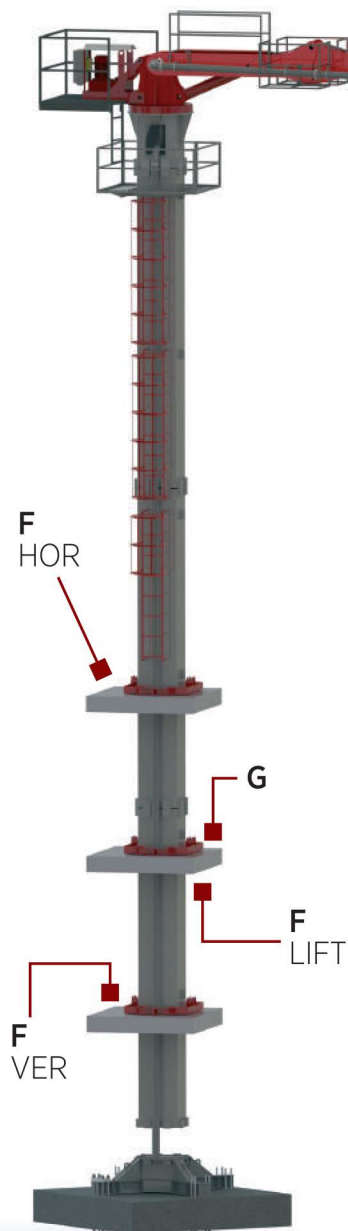
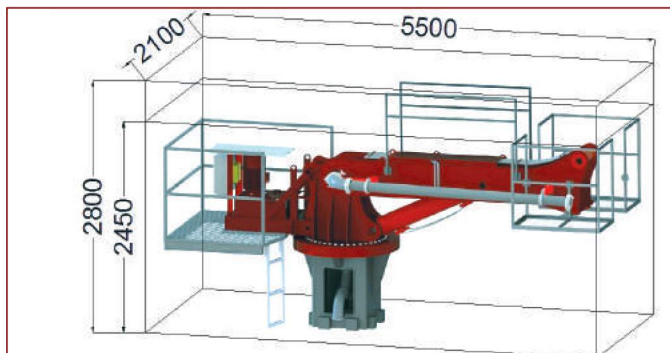
Unit weight: 2050kg
 3 x 2050 = 6150kg
 Equipments: 900kg
 Mast dimensions:
 750 x 750 x 6000mm

Pedestal & Mainboom : 3500kg
 Boom Section : 2600kg
 Mast Equipments : 900kg
 Mast Set + : 6150kg
13150 kg

Boom Section (2600kg)



Boom Pedestal & Mainboom (3500kg)



Loads On Slabs

Horizontal Force = $F_{HOR} = 91 \text{ kN}$
 Vertical Force = $F_{VER} = 194 \text{ kN}$
 Lifting Force = $F_{LIFT} = 129 \text{ kN}$

Note: Safety Coefficient $S=1,35$

*Specifications are subject to change without notice.



BHD 18+3

BHD 18 + 3 Series Technical Specifications

Mast Set



x2

Unit weight: 1450kg
 2 x 1450 = 2900kg
 Equipments: 800kg
 Mast dimensions:
 600 x 600 x 6000mm

Weight

Ballast Beam & Mainboom : 1400kg
 Boom Section : 1745kg
 Mast Equipments : 800kg
 Mast Set : 2900kg
 Counterweight : 2500kg
+ 9345 kg

Loads On Slabs

Horizontal Force = $F_{HOR} = 45 \text{ kN}$
 Vertical Force = $F_{VER} = 138 \text{ kN}$
 Lifting Force = $F_{LIFT} = 91 \text{ kN}$

Note: Safety Coefficient S=1,35

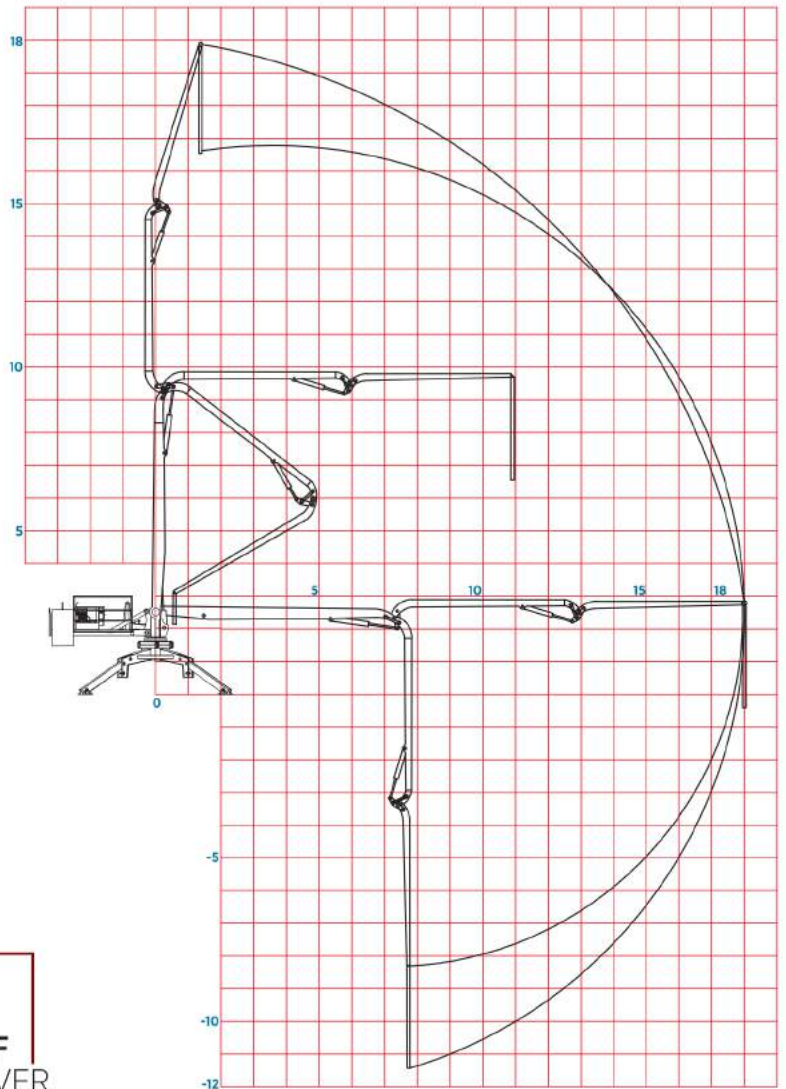
F_{HOR}



G

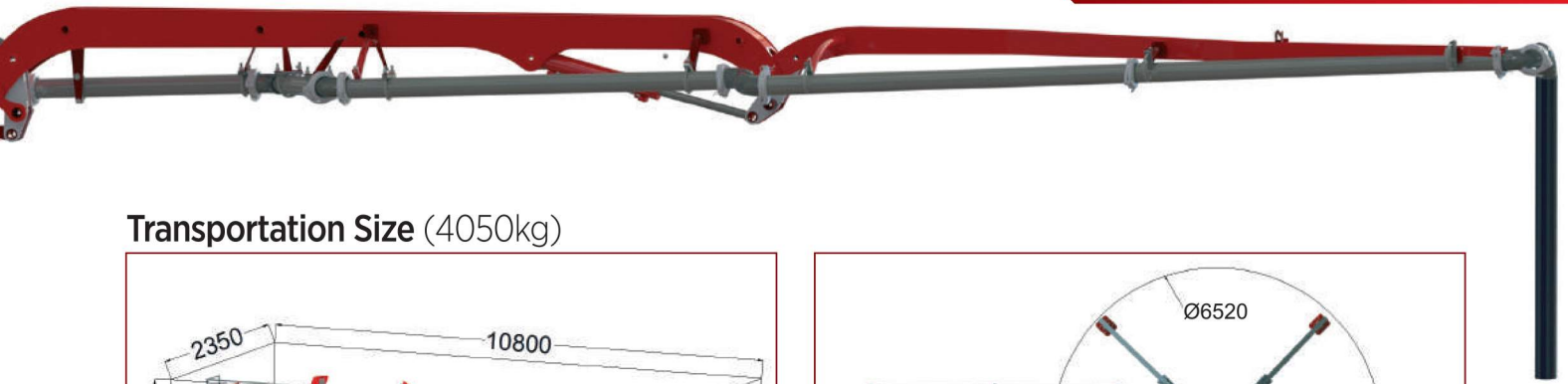
F_{LIFT}

F_{VER}

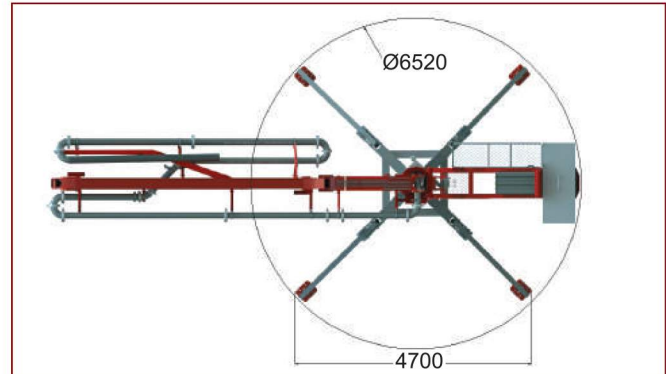
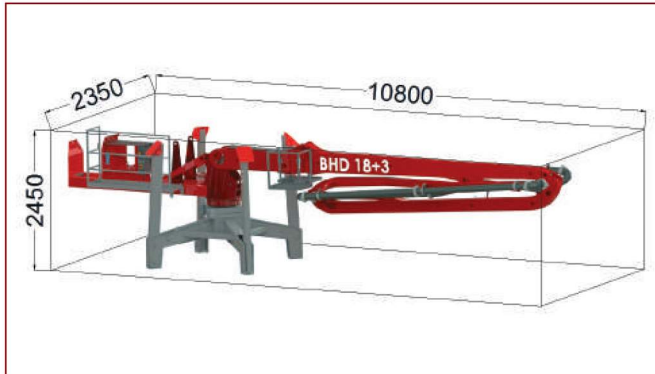


*Specifications are subject to change without notice.

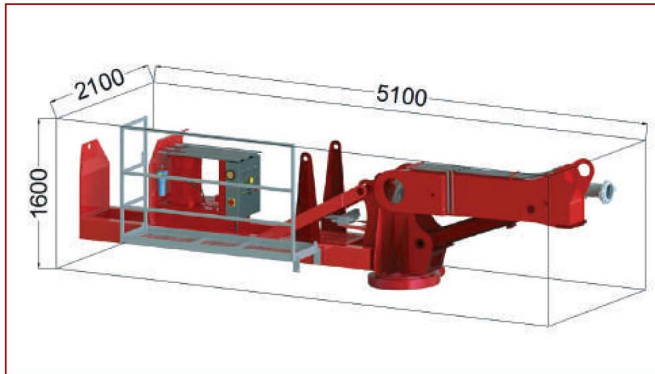
BHD 18+3



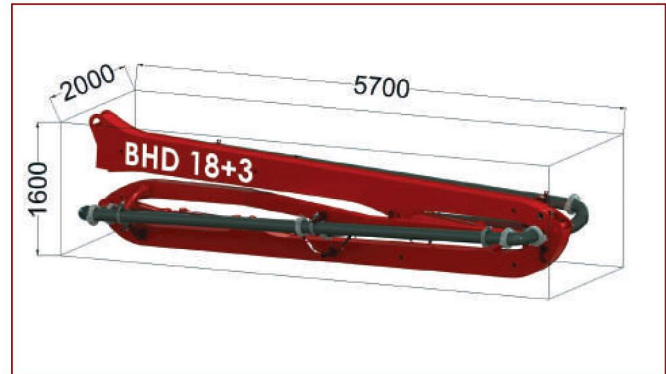
Transportation Size (4050kg)



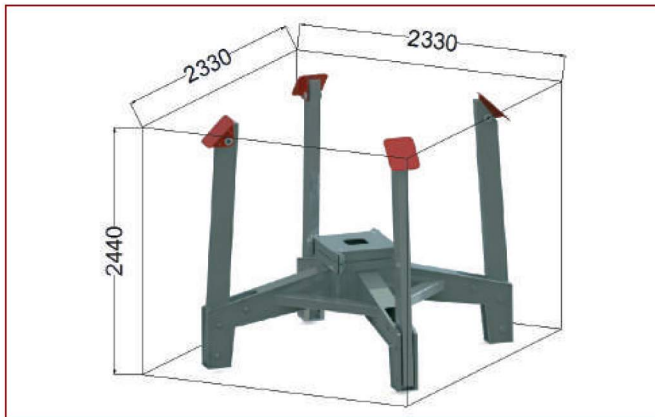
Ballast Beam & Mainboom (1400kg)

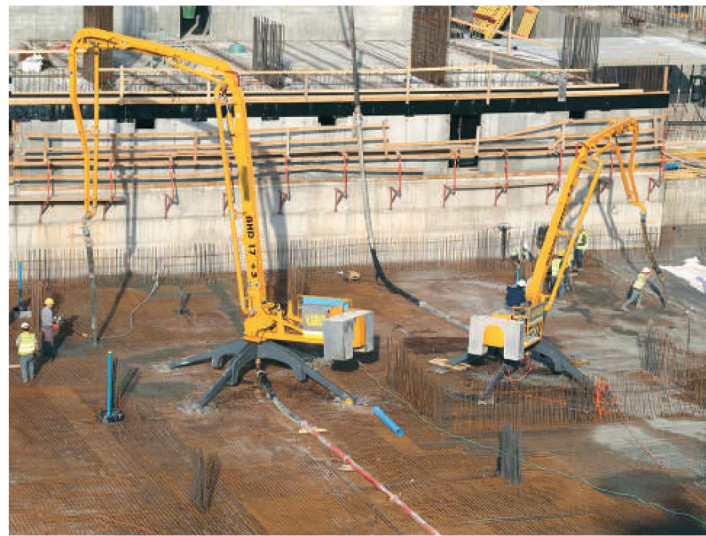
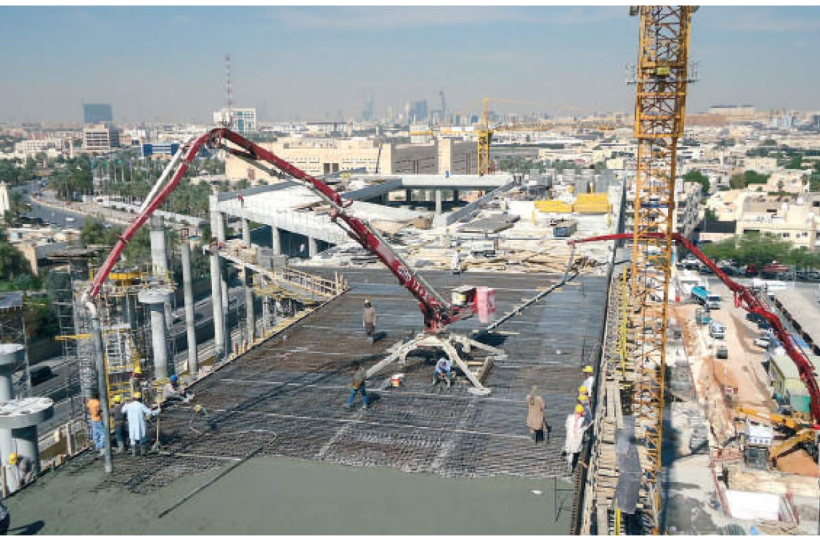
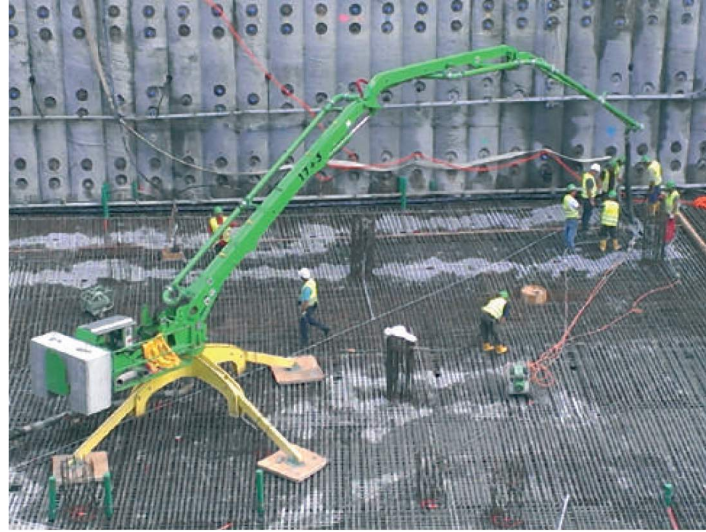


Boom Section (1745kg)



Leg Set (900kg) - For both 17m & 18m



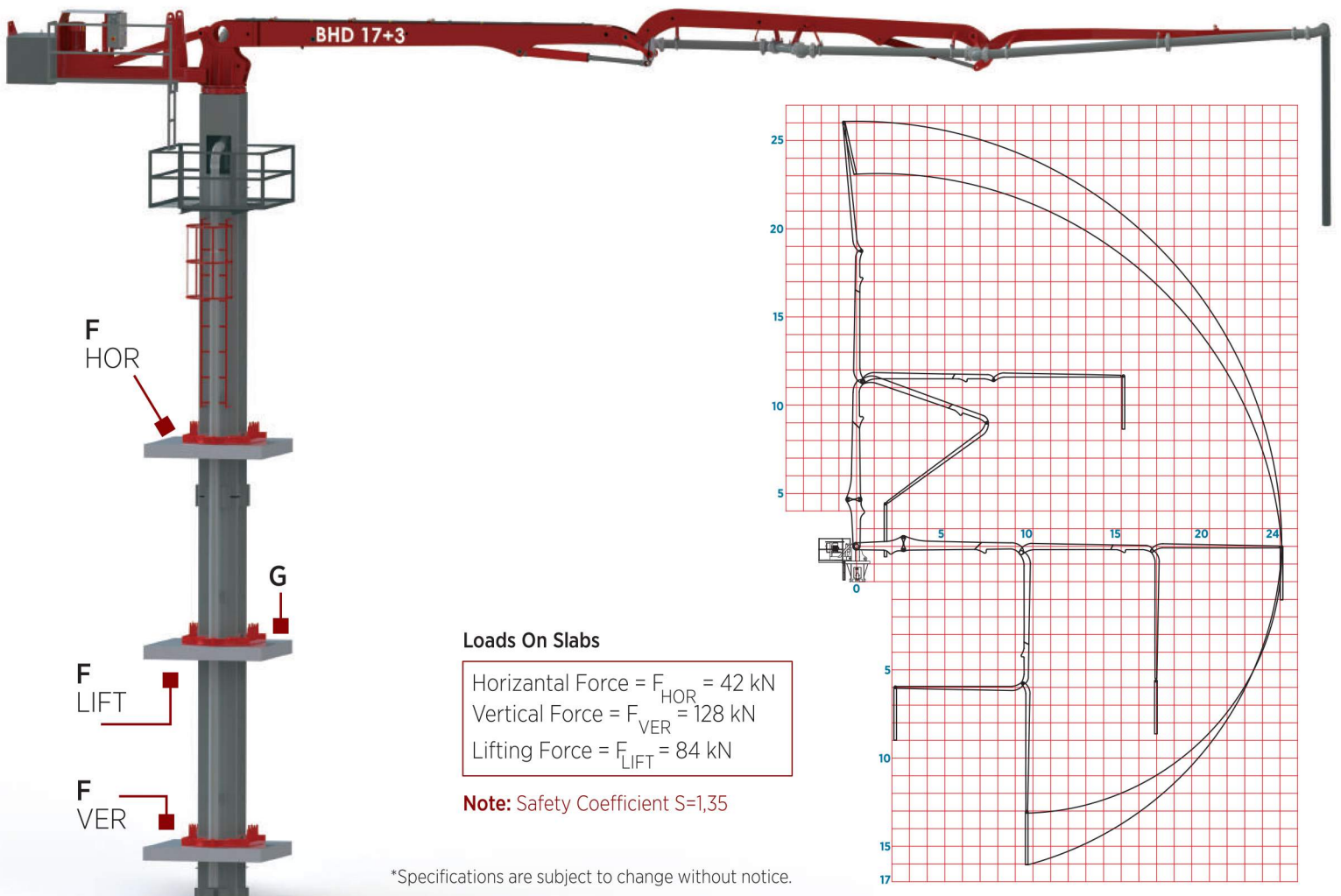
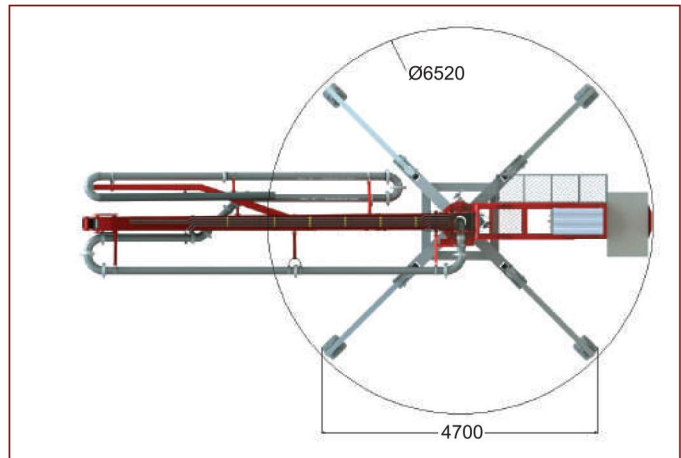
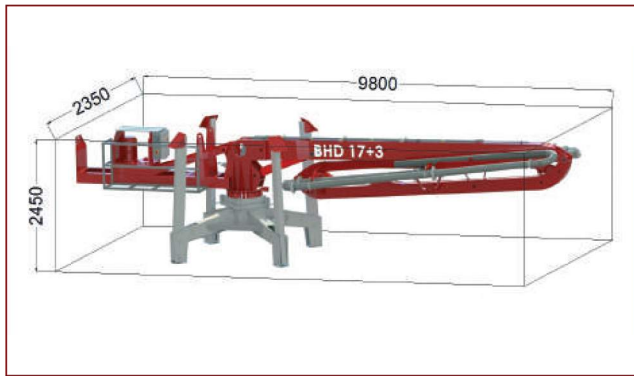


BHD 17+3

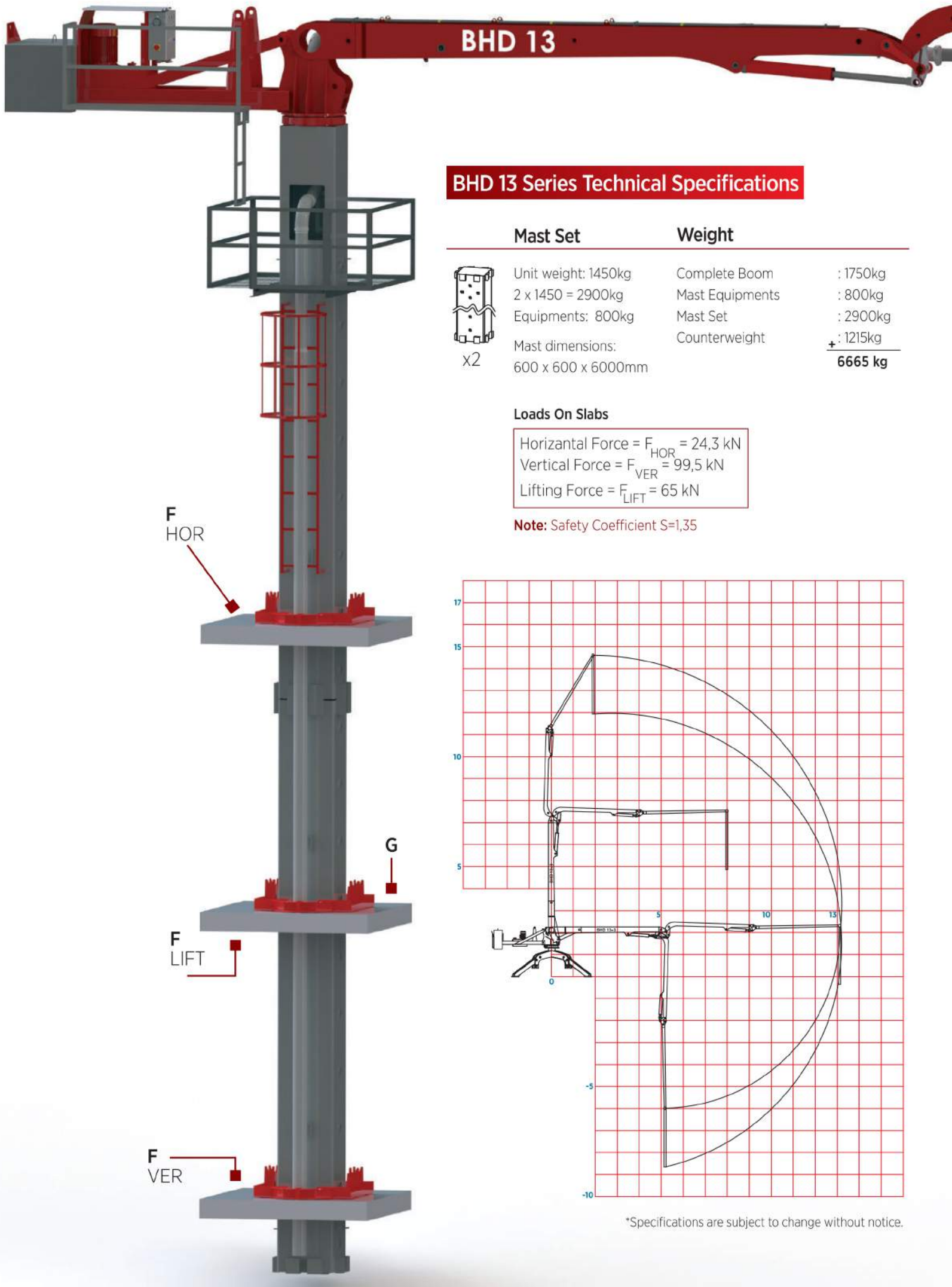
BHD 17 + 3 Series Technical Specifications

Mast Set	Weight
 Unit weight: 1450kg 2 x 1450 = 2900kg Equipments: 800kg Mast dimensions: 600 x 600 x 6000mm	Complete Boom : 3000kg Mast Equipments : 800kg Mast Set : 2900kg Counterweight : 2250kg <hr/> 8950 kg

Transportation Size (3900kg)



*Specifications are subject to change without notice.



BHD 13 Series Technical Specifications

Mast Set

Weight



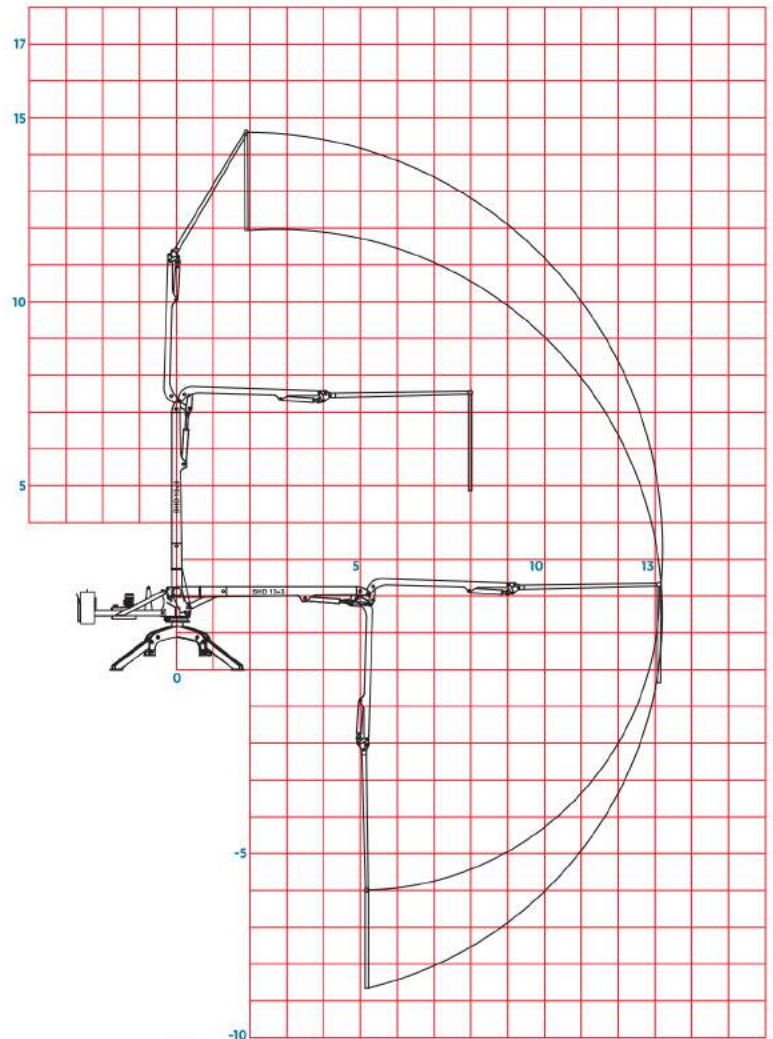
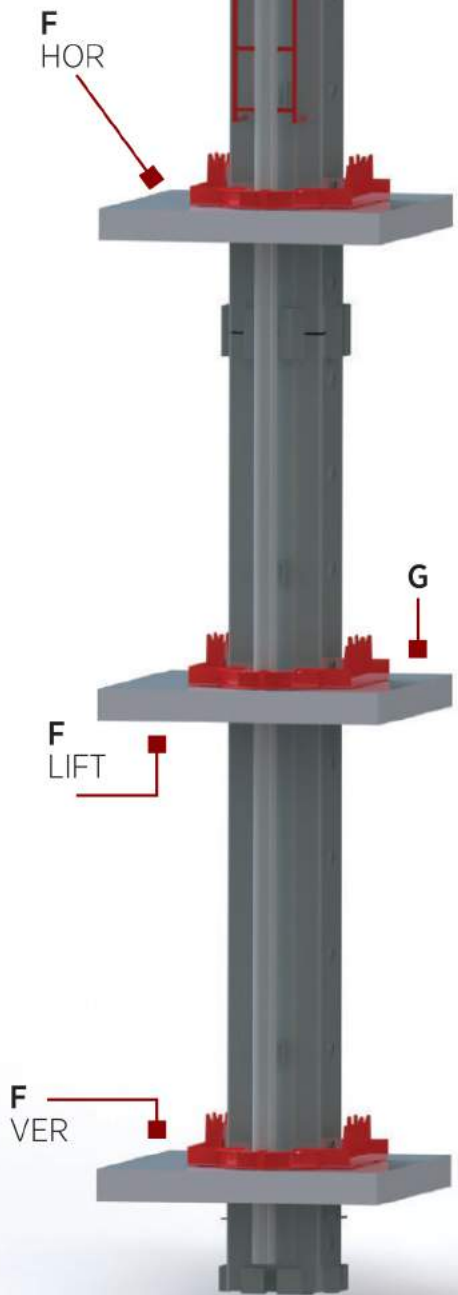
Unit weight: 1450kg
 2 x 1450 = 2900kg
 Equipments: 800kg
 Mast dimensions:
 600 x 600 x 6000mm

Complete Boom	: 1750kg
Mast Equipments	: 800kg
Mast Set	: 2900kg
Counterweight	+ : 1215kg
	6665 kg

Loads On Slabs

Horizontal Force = $F_{HOR} = 24,3 \text{ kN}$
 Vertical Force = $F_{VER} = 99,5 \text{ kN}$
 Lifting Force = $F_{LIFT} = 65 \text{ kN}$

Note: Safety Coefficient $S=1,35$

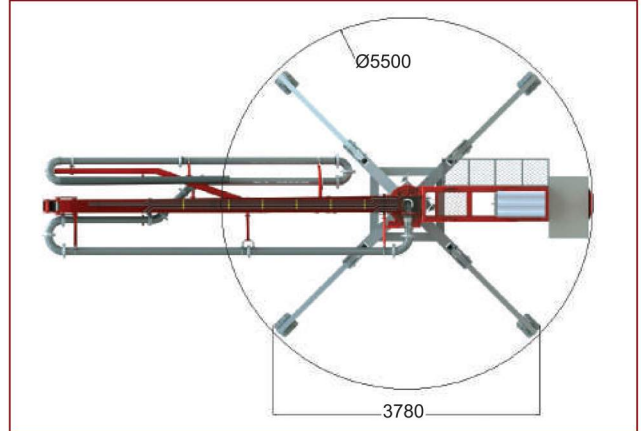
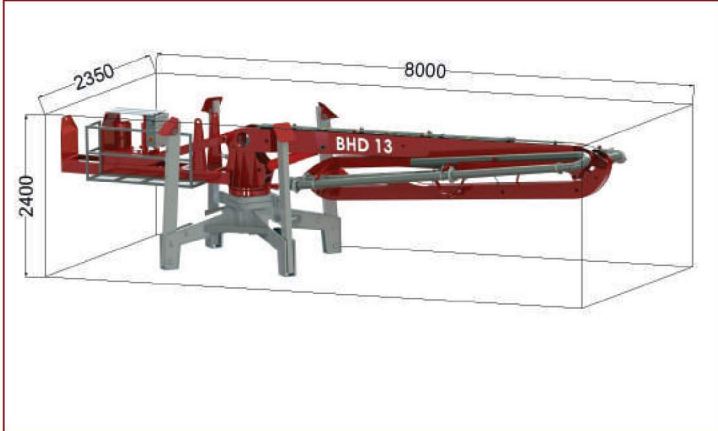


*Specifications are subject to change without notice.

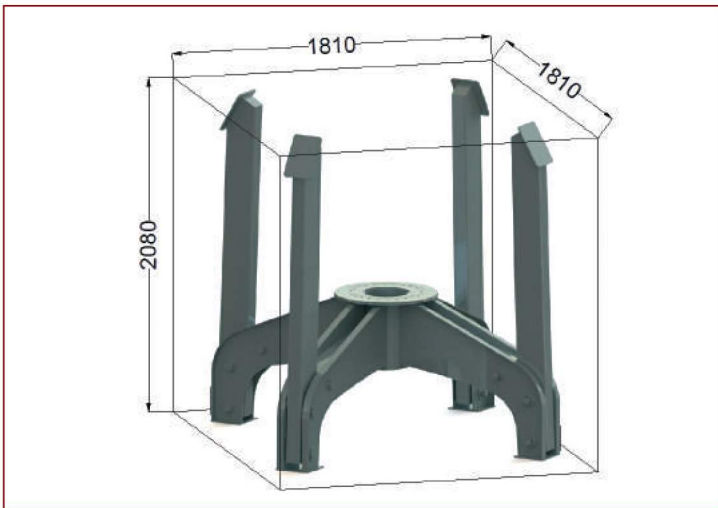
BHD 13



Transportation Size (2350kg)



Leg Set (600)



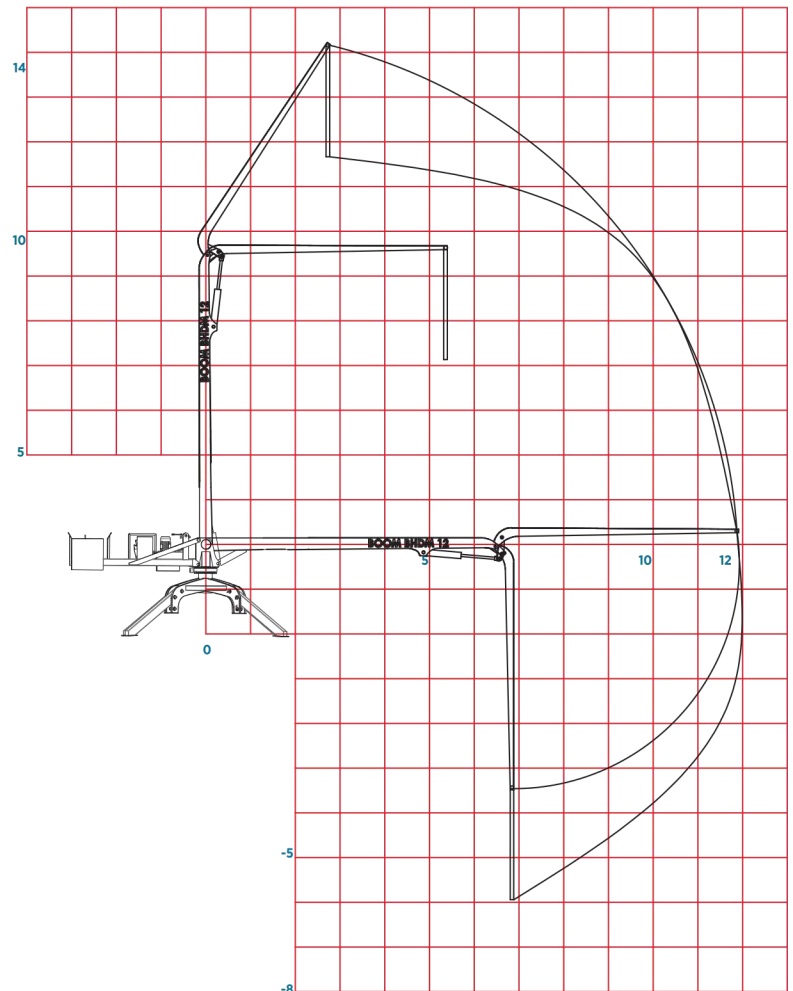
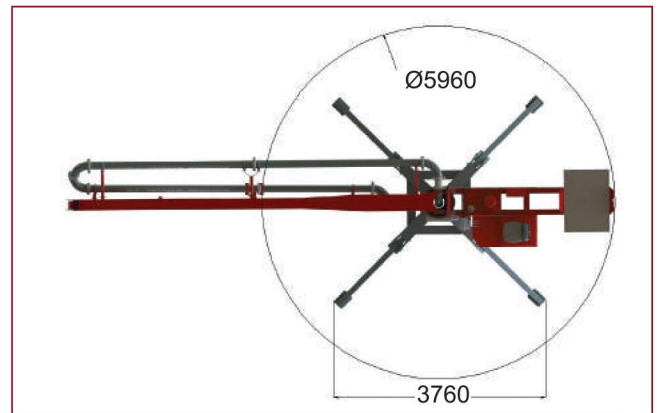
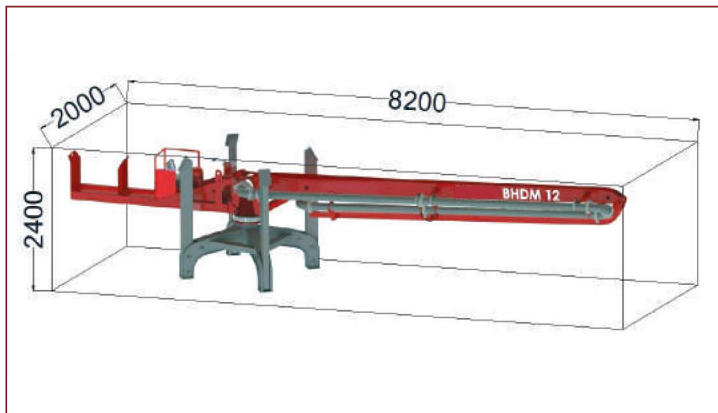
BHDM 12

BHDM 12 Series Technical Specifications

Weight

Leg Set	: 500kg
Boom Section	: 1700kg
Counterweight	+ : 1240kg
	3440 kg

Transportation Size (2200kg)



*Specifications are subject to change without notice.

BMD 10 - 12 - 14

BMD Series 10-12-14 Mechanical Distributor Booms

DESCRIPTION

Type	BMD 10	BMD 12	BMD 14
Max. Vertical Reach	1350mm	1350mm	1350mm
Max. Horizontal Reach	10m	12m	14m
Delivery Pipe Dia.	125mm	125mm	125mm
Slewing Range	Free	Free	Free
Weight of the Machine	1050kg	1350kg	1450kg
Ballance Weight	975kg	1100kg	1300kg
Transportation Size	1600x2220x8000	1600x220x9100	1600x220x11100

*Specifications are subject to change without notice.

Transportation Size (1450kg)

